

CERISE Carcassonne Sud***



Location

The Residence CERISE Carcassonne Sud is situated in Carcassonne, in the Aude department (11), in the Languedoc Roussillon region.

The residence is 500 meters from the Medieval City, 1,5km from the Bastide Saint Louis and 2 km from the TGV station. The nearest airport is Carcassonne Salvaza 6 km away. Toulouse and Blagnac airport are 1 hour's drive away by car.



Access :

By car: From Toulouse or Narbonne, take the A61 motorway and exit "24-Carcassonne Est". Follow the direction "Centre ville" to the Europe roundabout (at the end of the four lane road RD 6113 coming from Narbonne). Take the 2nd exit and continue on the boulevard Général Leclerc for 800m: the residence is on the left hand side.

By taxi: An example of prices from CERISE Carcassonne to: Carcassonne Salvaza airport: 20€ / SNCF railway station: 10€

Interests :

Château Comtal and Saint Nazaire Basilic- 1km - 4min by car

Saint-Michel Cathedral- 2km - 5min by car

Australian Park- 4 km - 7 min by car

Carcassonne golf course- 4 km - 8 min by car

Lake Cavayère leisure complex- 6 km - 11 min by car

Beach at Gruissan - 73 km - 49 min by car



CERISE Carcassonne Sud***



Close to the Medieval City



Presentation

In the heart of the Aude department, the residence CERISE Carcassonne Sud is situated in an exceptional location 10 minutes by foot from the Medieval City, a World Heritage Site.

Its 76 apartments are spread over two buildings set in vast landscaped gardens. The former mansion house which has preserved the charm of old buildings houses the reception and the breakfast room. A free car park is available. For leisure, the residence offers access to its indoor heated swimming pool, a Hammam and a fitness room.



CERISE Carcassonne Sud

1 rue Darius Milhaud – 11000 CARCASSONNE

Tel : +33 (0)4 68 26 20 10 - Email adress: cerise.carcassonnesud@exhore.fr

Fax : +33 (0)4 68 26 20 09 - Website : www.cerise-hotels-residences.com

Reception Opening Times: From July to august: from 8am to 9pm. From September to June : every day from 8am to midday and from 4pm to 8pm. Check-in 4pm, check-out 10am.



Studios and apartments

The 76 studios and apartments in the residence are spread out in two new three storey buildings with lifts, overlooking a private garden courtyard. They are spacious (30 à 50 m²) and can accommodate between 2 and 6 people. Air conditioning, fully furnished with a kitchenette.

The apartments for 4 and 6 persons have a dishwasher. Some rooms are suitable for the disabled (please contact reception).

Facilities :

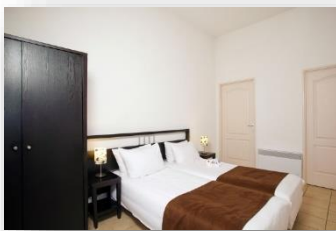
Indoor swimming-pool / Hammam / Fitness room / Free WIFI / Free car-park / Laundry / Baby's cot on loan (according to availability) / 1 high chair only available in breakfast room / International channel (Spanish and English) etc ...



Double bed studio



Studio for 3 persons



Apartment for 4 persons



Apartment for 6 persons

Food and beverage

Buffet breakfast at the Residence **CERISE Carcassonne Sud** is served in the breakfast room in the old mansion house. It is served everyday between 8 and 10h30.

Meal offer for customers :

- Sack lunch for sale at the desk
- Nearby Restaurants : to have lunch or have dinner in our restaurants partner, within walking distance, see our recommended places
- In room meals possible



Breakfast room



En Ville



Périphérie



Calme & Détente



Mer & Resort



Ski & Montagne

Leisure

The Residence CERISE Carcassonne Sud is next to the Medieval City, the magnificent old Medieval part of town far from the bustle of modern life, a World Heritage Site, like the Canal du Midi which runs through the city. Situated in the heart of the Aude department, the region is rich in history with the Cathars and the Occitan culture. Surrounded by the Corbières and the Montagne Noire, CERISE Carcassonne Sud offers an exceptional location for all your activities.

• The Medieval City and Saint-Louis Bastide

With a tour guide and interpreter, come and discover Carcassonne and its Medieval City, a World Heritage site. After the legend of Lady Carcas, lady of the manor, you will cross the Pont Vieux to enter into the heart of today's town. "La Bastide Saint Louis" is one of the largest bastides in France. The visit ends on the banks of the Canal du Midi.

• Raymond Chésa Leisure Park - Lake Cavayère

Only 6 km from the Residence CERISE Carcassonne Sud, the Raymond Chésa Leisure Park spreads over 40 hectares. Take a walk around the lake (about one hour) and you will discover a variety of different landscapes and ecological niches with in the centre, bird island dedicated to duck nesting. A place for walking, the Park is also a leisure area where you will find picnic areas, pedal boats, a crazy golf, aquatic games, several beach-volley courts and a forest adventure park.

Recommended places

At the crossroads of the Mediterranean, the Massif Central and Gascony, the Languedoc Roussillon offers a wide variety of specialties:

- **The restaurant le Flagrants des Lices** is located at the heart of the medieval city with a shaded terrace, an internal patio and two rooms. This restaurant is mentioned in the guide of the Routard and the Petit Futé.
- **L'Adelaïde** : contemporary style with a view over ducal castle. Traditional cuisine with special touches.

Find all our hotels and residences CERISE on www.cerise-hotels-resorts.com

Auxerre | Carcassonne Nord | Carcassonne Sud | Chatou | Lannion | Lens | Luxeuil-les-Bains | Nancy | Nantes Atlantique | Nantes La Beaujoire | Royan | Saint-Paul-Lès-Dax | Strasbourg | Toulouse | Valence